

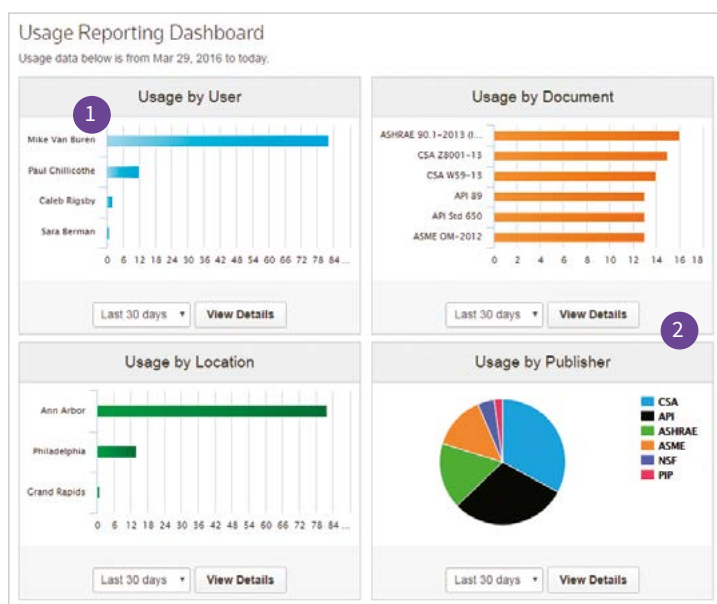
Techstreet Enterprise

Get a complete picture of your enterprise-wide standards usage

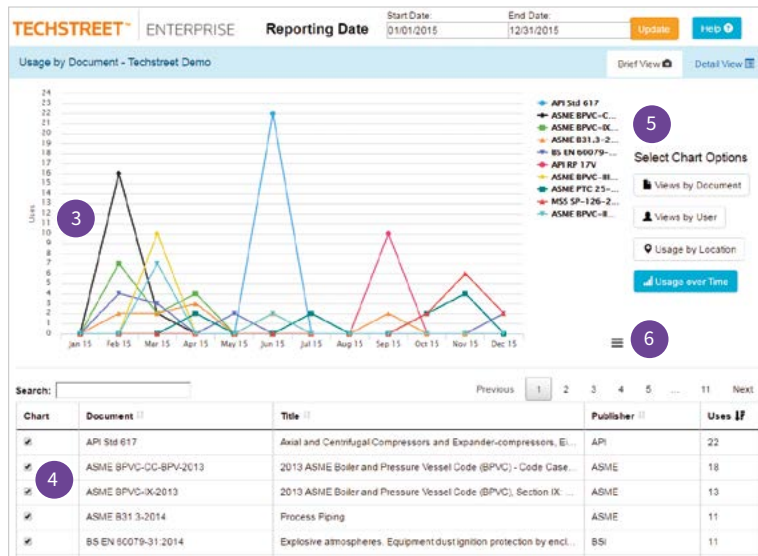
Techstreet Enterprise provides the most detailed and easy-to-understand reporting in the standards industry. When you have the most complete picture of your standards usage, you can make the right decisions about which standards to keep in your subscription.

With *Techstreet Enterprise's* Usage Dashboard, customers get a snapshot of usage across users,

documents, locations, and publishers. Usage is presented visually through charts, and users can interact with their usage data in ways no other vendor supports. Each interactive report also has a brief view, including charts, along with a detailed view for greater visibility. You can also manipulate the report onscreen before copying usage data to your favorite spreadsheet. *Techstreet Enterprise* Usage Reporting gives you full visibility into your standards usage.



1. Use the dashboard to see who your most popular users are, and which documents, locations, and publishers are most popular.
2. Click **View Details** to go to a full report.



3. View usage over time with charts.
4. See the actual data that is being charted.
5. Choose from various chart options for different views of your usage data.
6. Export your chart for external use.

Document	Title	Publisher	Location	User	Uses
API Std 617	Axial and Centrifugal Compressors and Expander-compressors...	API	Ann Arbor, MI, USA	Tim Dzekan	22
ASME BPVC-CC-BPV-2013	2013 ASME Boiler and Pressure Vessel Code (BPVC) - Code C...	ASME	Ann Arbor, MI, USA	Mike Visser	18
ASME BPVC-IX-2013	2013 ASME Boiler and Pressure Vessel Code (BPVC), Section I...	ASME	Ann Arbor, MI, USA	Mike Visser	13
ASME B31.3-2014	Process Piping	ASME	Ann Arbor, MI, USA	Mike Visser	11
BS EN 60079-31-2014	Explosive atmospheres. Equipment dust ignition protection by en...	BSI	Ann Arbor, MI, USA	Mike Visser	11
API RP 17V	Recommended Practice for Analysis, Design, Installation, and Te...	API	Ann Arbor, MI, USA	Tim Dzekan	10
ASME BPVC-III NS-2013	2013 ASME Boiler and Pressure Vessel Code (BPVC), Section I...	ASME	Ann Arbor, MI, USA	Mike Visser	10
ASME PTC 25-2014	Pressure Relief Devices	ASME	Ann Arbor, MI, USA	Mike Visser	10
MSS SP-126-2013	In-Line, Spring-Assisted, Center-Guided Check Valves (Carbon...	MSS	Ann Arbor, MI, USA	Mike Visser	10
ASME BPVC-III NF-2013	2013 ASME Boiler and Pressure Vessel Code (BPVC), Section I...	ASME	Ann Arbor, MI, USA	Mike Visser	8
ASME BPVC-X-2013	2013 ASME Boiler and Pressure Vessel Code (BPVC), Section...	ASME	Ann Arbor, MI, USA	Mike Visser	8

7. Search across your usage data.
8. Sort your usage data by any column.
9. Receive contextual help.
10. Drill deeper into your usage data.

Learn more about Techstreet Enterprise

For more information, please contact us in the way most convenient for you. Visit: techstreet.com/subscriptions

Call toll free: +1 855 999 9870 or +1 734 780 8000 (outside the U.S. and Canada)

Email: techstreet.subscriptions@clarivate.com

Techstreet

3025 Boardwalk Drive
Suite 220, Ann Arbor
MI 48108

S034158
08.2017
© 2017 Clarivate Analytics

clarivate.com

Techstreet
Connecting the world to standards

Clarivate
Analytics